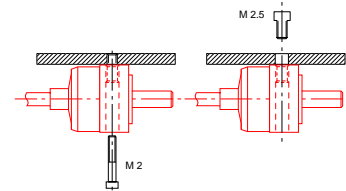
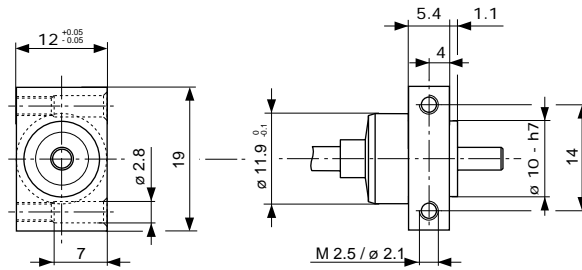


## miniature 3-channel encoder system - $\varnothing 12$ with 4 x 500 lines resolution

<p>LS-12-K</p>		
<p>LS-12-KR</p>		
<p>LS-12-KH</p>		
<p>LS-12-KF</p>		
<p>LS-12-KB</p>		

## LS-12-KC



<b>Housing</b>	diameter material	12.0 mm Al-alloy
<b>Shaft diameter</b>	standart	∅ 3.0 h6 mm
<b>Protection</b>	housing	IP 65
<b>Temperature</b>	on demand	-20°C to 85°C -30°C to 120°C

LS - 12 - K R - 1000				
base type	sensor - ∅	K = round cable X = Flexprint	housing type	Resolution

<b>Nbr. pulses</b>	channel A and B index	500, *(250, 125) zero pulse 90°
<b>Output channel</b>	standard on demand	A, B, Z zero pulse 90° A•B, RS, Z
<b>Power supply</b>	standard consumption	5 VDC ± 20% 2...12 mA
<b>Output signal</b>	max. RPM pulse ratio execution	8,000 rpm ± 20 % CMOS / TTL
<b>Connection</b>	round cable	5 x ∅ 3.2

Specifications are preliminary and may change without notice. Other specifications on demand.